

Alaska Department of Fish and Game

Habitat Section
Southeast Region



113-51-10040-2005 Tributary 2

ADDITION

Water body name:

Quad: Sitka C-4

Upper Reach Latitude: 57.540060 **Longitude:** -135.179465

Lower Reach Latitude: 57.539222 **Longitude:** -135.180079

Survey date: 8/4/2023

Species & Lifestage:

Survey crew: NJ, CD

Findings: We surveyed this uncataloged stream using baited minnow traps and GPS and captured juvenile coho salmon, cutthroat trout, and Dolly Varden. This stream meanders through forested habitat and eventually connects to a large beaver dam complex further upstream. Minnow traps were set above and below the beaver dam, as well as at the upper extent of the complex in a ponded field (Table 1; Figures 1–3).

Recommendations: Add this uncataloged stream to the anadromous waters catalog for rearing coho salmon up to waypoint 562 (Figure 4).

Nomination: Pending

Table 1.—113-51-10040-2005 tributary 2 survey data.

Waypoint	Latitude	Longitude	Notes	Stream Width ft	Stream Substrate	Habitat Features	Gradient %	Sample Effort	Sample Results
542	57.542477	-135.172061	Setting trap in upper extent of beaver dam complex. Field with ponded water, likely connected to other water in this area. Adjacent to gravel channel with other trap set.		Fine Organic	Beaver Pond LWD	0-1	MT	9 CT 2 DV
562	57.540022	-135.179709	Ponded beaver complex. Water from pond dammed by many fallen large trees. Pond water has multiple drainage locations to downstream. Set two traps in pond.		Fine Organic	Beaver Pond	0-1	MT	6 CO 2 DV
563	57.539966	-135.179747	Below the beaver dam. Two coho caught. Pies of stream at road also attached.			Large Pool	0-1	MT	2 CO



Figure 1. Juvenile coho salmon caught at waypoint 563.



Figure 2. Upstream at waypoint 563.



Figure 3. Ponded water at waypoint 562.

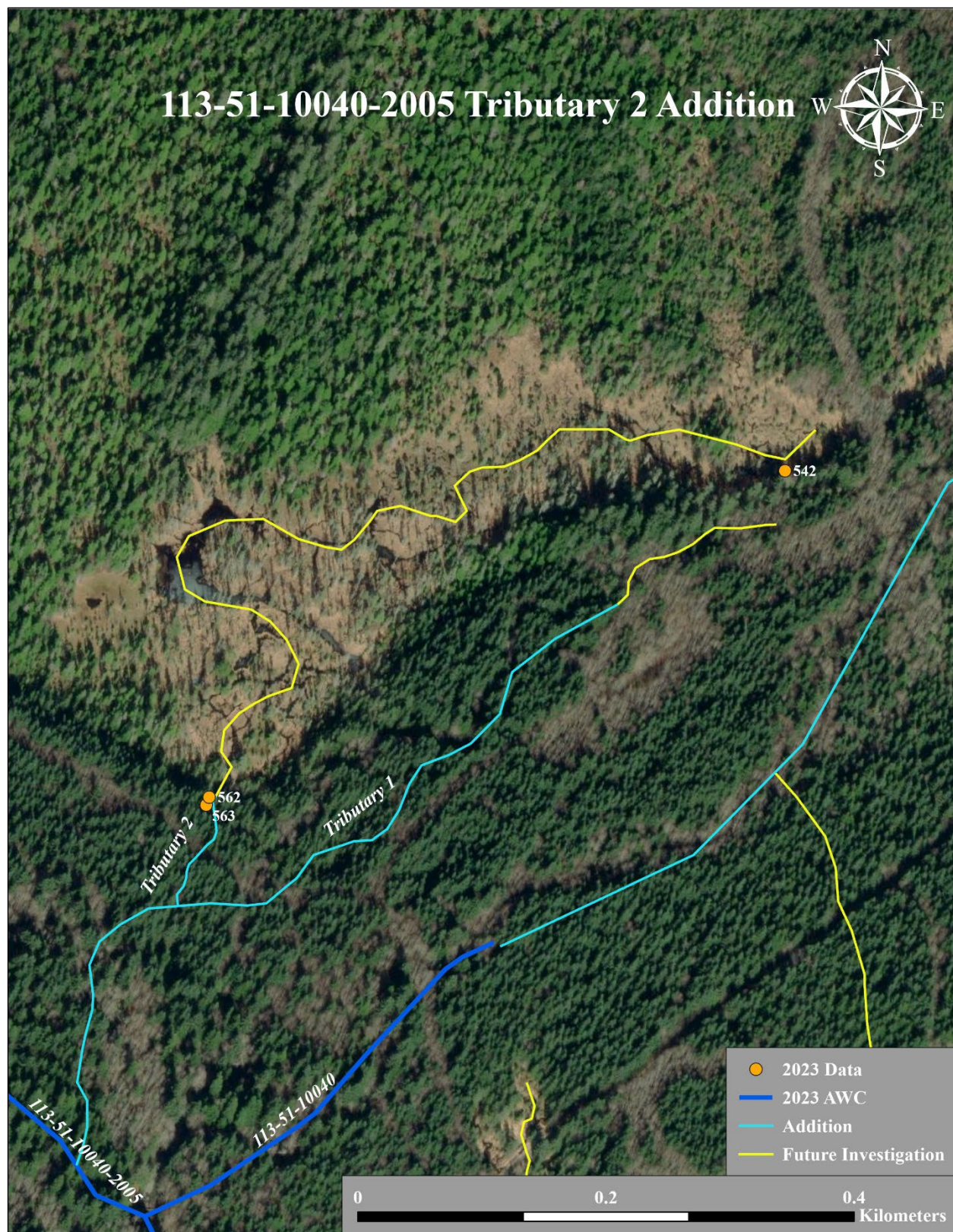


Figure 4. Stream No. 113-51-10040-2005 tributary 2 addition map.